



**PAL VERSION**

**INSTRUCTION BOOKLET**

**Nintendo®**

Distributed by THE Games Ltd. in U.K. & Eire  
Parham Drive, Boyatt Wood, Eastleigh,  
Hampshire, SO50 4NU, England

Imported to Scandinavia by  
**Bergsala AB**, Kungsbacka Sweden

PRINTED IN GERMANY



**SUPER NINTENDO™**  
**ENTERTAINMENT SYSTEM**

**WARNING : PLEASE CAREFULLY READ THE CONSUMER INFORMATION AND PRECAUTIONS BOOKLET INCLUDED WITH THIS PRODUCT BEFORE USING YOUR NINTENDO® HARDWARE SYSTEM, GAME PAK, OR ACCESSORY.**



*This seal is your assurance that Nintendo has reviewed this product and that it has met our standards for excellence in workmanship, reliability and entertainment value. Always look for this seal when buying games and accessories to ensure complete compatibility with your Nintendo product.*

Thank you for selecting the Super Nintendo Entertainment System™ ARKANOID™\* game pak.

Please read this instruction booklet thoroughly to ensure proper handling of your new games. Then save this booklet for future reference.

\*TM and © 1997 Taito Corp.  
Licensed to Nintendo.  
TM and © are trademarks of Nintendo CO., LTD.  
© 1997 Nintendo CO., LTD.

## CONTENTS

**The Elusive Doh!**

**4**

**Ship Control**

**6**

**Setting Up**

**8**

**Edit Mode**

**10**

**Capsules**

**12**

**Blocks**

**14**

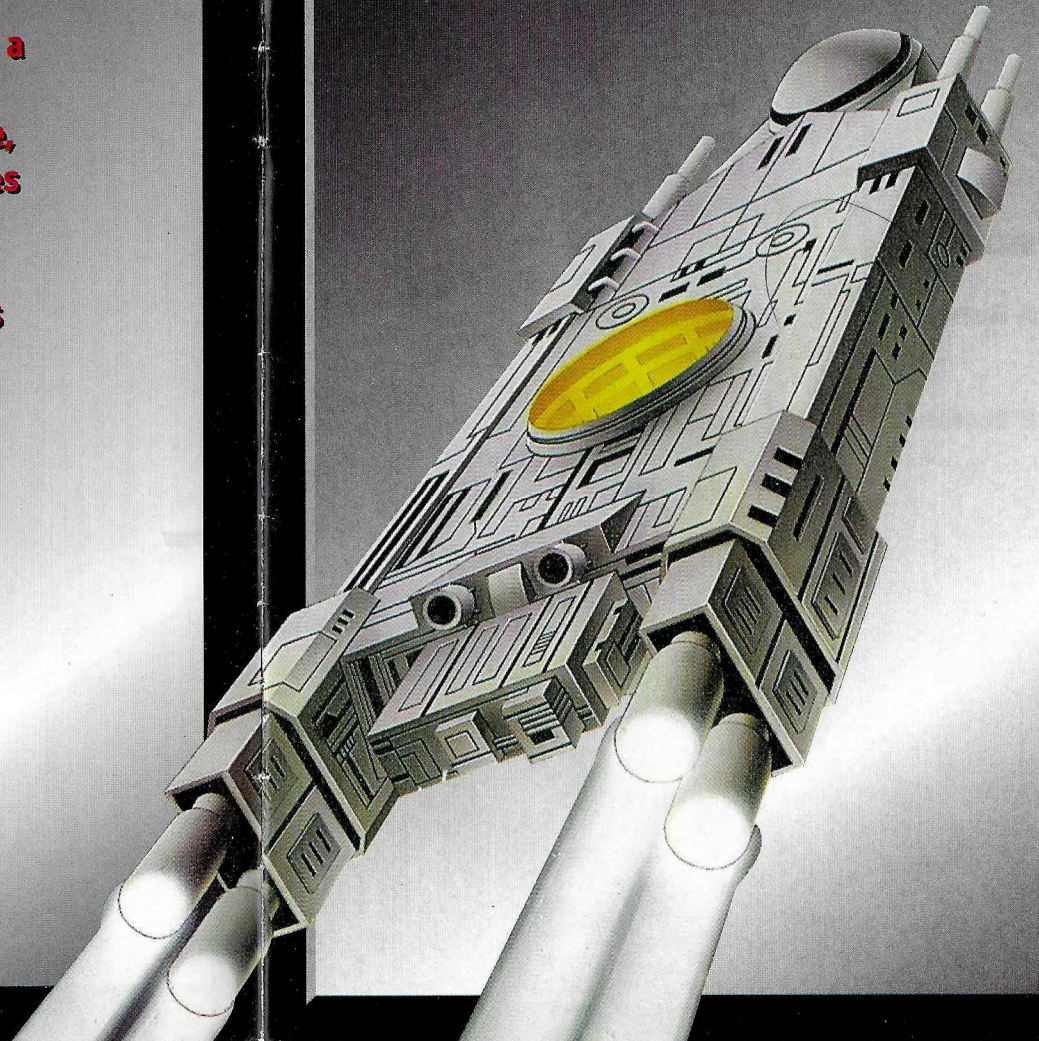
**Tips from Mission Control**

**16**

**Warranty & Service Information**

**19**

For years, Commander Therle and his people have been searching for a new world to call home. Each time they get close, their enemy, Doh, pushes away Therle's ships. Recently, a sensor scan detected new terra-class planets. Therle sent scout ships to check them out, but Doh once again scattered his Blocks across the solar systems to stop the ships. Before the scout ships can reach the planets, they must destroy the Blocks.



## SHIP CONTROL

### + Control Pad

Move ship left to right  
Move cursor on the  
Menu screen

### START

Pause game  
Confirm selection on  
the Menu screen

### SELECT

Pause game

### A Button/X Button

Fire lasers  
Release ball

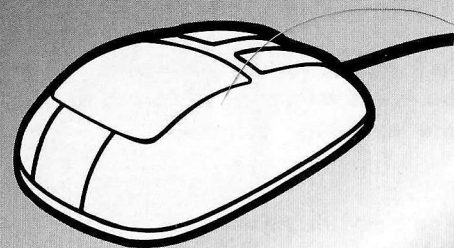
### B Button/Y Button

Hold either button to  
make your scout ship  
move faster



## The Super NES Mouse

When using the Mouse, press the Right Mouse Button to pause. Press the Left Mouse Button for all other functions. Move the ship left and right by sliding the Mouse left and right.



## SETTING UP

Correctly insert the Arkanoid-Game Pak into your Super Nintendo Entertainment System and move the POWER switch to the ON position. When the Title screen appears, press START to view the Main Menu.



### 1 Player

In 1-Player mode, you will be alone on your mission to destroy the Blocks and find the terra-type planets.

### 2 Player

You have three choices in 2-Player mode: A, B or C. In A, the players take turns piloting the ship. In B, each player has a ship on screen and they fight together. In C, the screen is split, and the two players compete against each other.

### Password

When you have burned out all of your ships, the game ends. A password will then appear. Use that password here on the Menu screen to return to the last level you completed.



## OPTION MODE

When you select this mode, an Option screen appears. Game options are listed below:

### Player Speed

To change your normal travel speed, press + or + on the + Control Pad to adjust the setting.

### Player Stock

Choose the number of ships available to you (3, 5 or 7).

### Game Level

Select between Easy, Normal and Hard difficulty levels.

### Sound

Mono or Stereo.

### B.G.M.

To listen to the different music samples, use the + Control Pad to select the number and press the A Button.

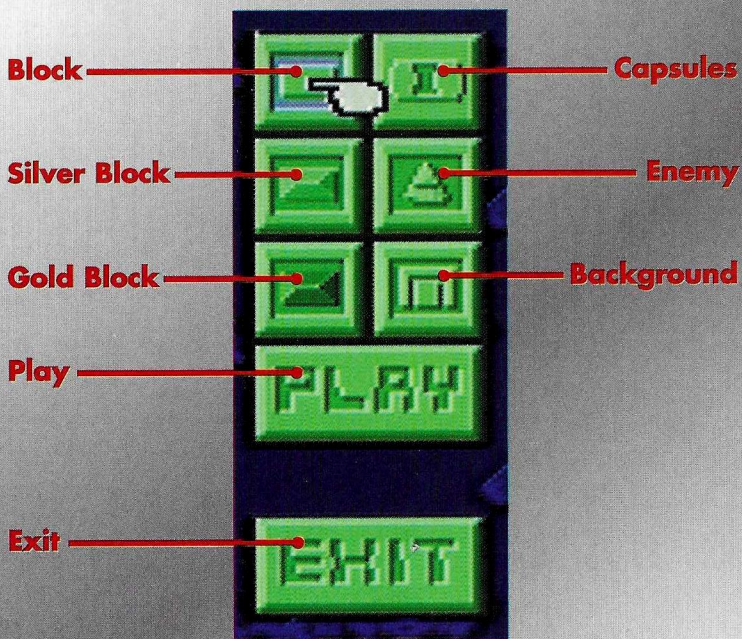
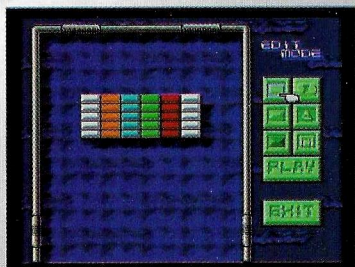
### S.E.

To listen to the different sound effects, use the + Control Pad to select the number and press the A Button.

## EDIT

To design a level, choose Edit on the Option screen. When the Setup Panel appears, move the hand with the + Control Pad and press the X Button to select an object.

Reposition the hand and press the X Button to place that object on the field.



## Blocks

Normal blocks are the only ones that can hold capsules. Usually, you can destroy these blocks with just one hit.

## Capsules

Position the capsules in the Normal Blocks. When you destroy one of those Blocks, its capsule is released.

## Silver Block

Shattering this type of block requires greater skill. You must hit Silver Blocks several times to break them.

## Enemy

When you want a more active foe, place a number of these fierce enemies in the field. They are hard to beat.

## Gold Blocks

Test your skill with the Gold Blocks. See how well you can use them to ricochet your ball into other Blocks.

## Background

Alter the background colour of the play field with this option. Choose a colour that is easy on your eyes.

## Play

When you have designed the perfect challenge for yourself, select this option and start running the course.

## Exit

Select Exit to return to the Title screen.

## CAPSULES

Sometimes when you destroy one of Doh's Blocks an energy capsule will fall out. Capsules give your scout ship different abilities. Catch them by positioning yourself under them. Your ship will absorb and use them immediately.

### S Capsule

If your ship has been changed by a capsule, the S capsule will return it to a normal scout ship.



### T Capsule

It creates a force field behind your ship to deflect a missed ball. It will only deflect one ball.

### M Capsule

This allows you to destroy multiple Blocks in a row (except Gold Blocks). Your ball travels right through them.



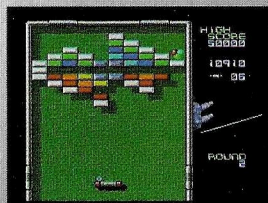
### L Capsule

It equips your scout ship with lasers. To blast your lasers, press the A or X Button.



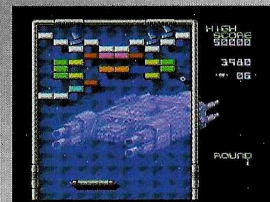
### G Capsule

It forms a glue-like field around your ship so that you can hold on to balls until you press the A or X Button.



### E Capsule

The length of your ship is extended to almost twice its original size.

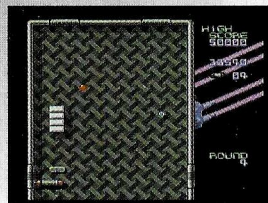


### D Capsule

The D capsule generates eight balls from the original ball. Keep all of them in play as long as you can.

### B Capsule

Catch this capsule to open a warp gate between levels. Go through this gate to enter a new level.



### P Capsule

An extra scout ship will be added to your fleet. P capsules are very rare.

## BLOCKS

You will be faced with three kinds of Blocks: Normal, Silver, and Gold. In addition to the Blocks, you must fight Doh's henchmen. They appear randomly and you must fire many balls or laser beams to defeat them.

### Normal Blocks

These are the most common Blocks, and they come in many different colours. They hold the capsules. One hit will destroy these Blocks.



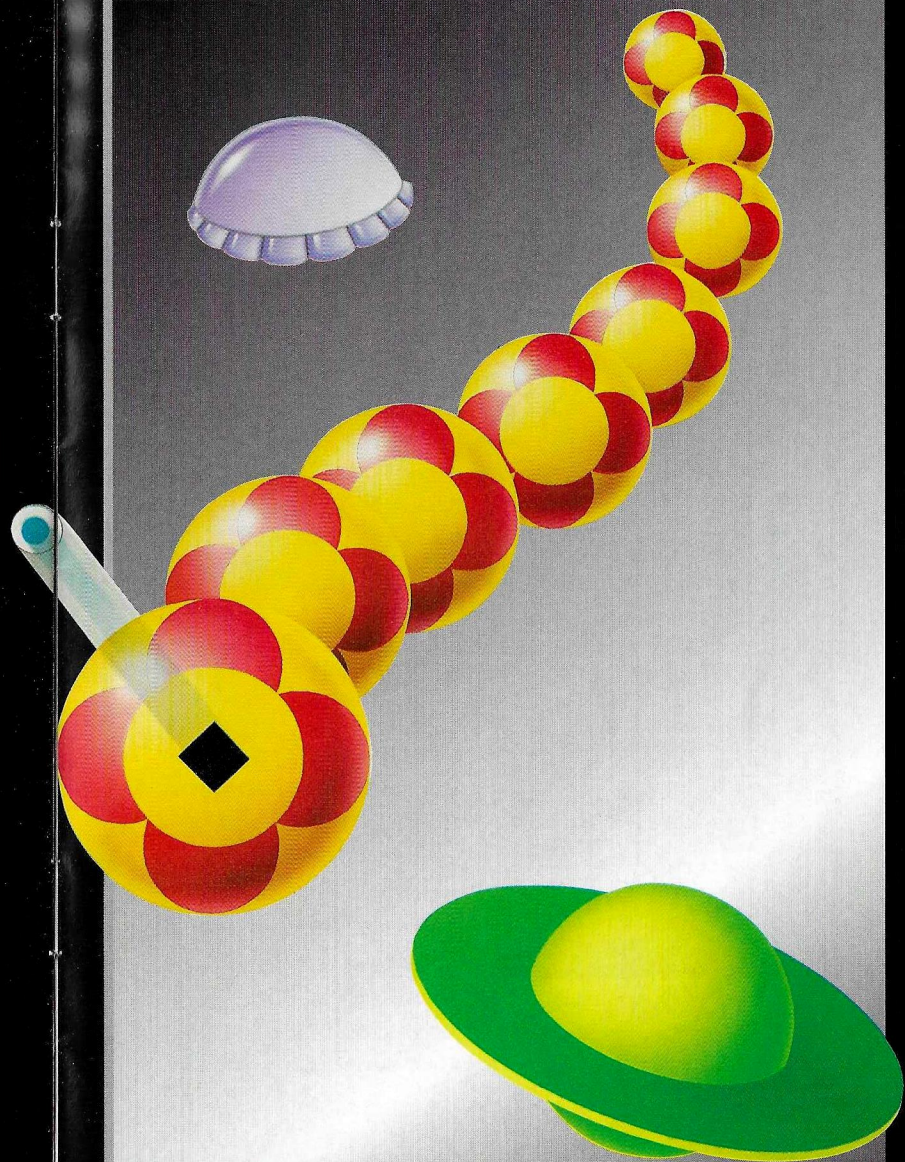
### Silver Blocks

The Silver Blocks do not hold any capsules. They are also harder to destroy. You will need to strike them several times.



### Gold Blocks

It's impossible to destroy Gold Blocks. Instead, use them like walls to bounce your balls into other Blocks.



## TIPS FROM MISSION CONTROL

Back at Mission Control, Commander Therle has some good advice for his scout ship pilots. Pay attention to his tips, and your chances for survival will increase. The lives of all your people depend on your success.

### High Speed

As soon as you are familiar with piloting your ship, go to the Option screen and increase the speed. You will find that it is easier to destroy Blocks when you move at high speeds.



### Grab the M

Catch the M capsule as often as you can. Being able to fire your ball through multiple Blocks at once is the best weapon your ship can have. You can cover a lot of space this way.



### Watch the Ball

As you race through the barriers, keep your eye on the ball, not on your ship. As your skill improves, you will be able to move the ship into position automatically.

### Let Some Go

Don't risk losing your ship just to grab a capsule. You could fail your mission that way. Let the capsules that are hard to catch fall off the screen. You may be better off without them.



### Defeating Bosses

The huge bosses are difficult to defeat, but not impossible. Use your head to think up ways to strike them with the ball. Each boss has his weak spot-you just have to find it.



## GAME HELP



Do you have a game play problem that has you beat?

Do your combo's lack that Killer Instinct?

Are you stranded on Yoshi's Island?

Then call the **NINTENDO HOTLINE** and your personal games counsellor will be ready to help with all those video games blues.

We are open 7 days a week, **365** days a year.

Mon - Fri - 12pm - 8pm

Sat - Sun - 10am - 6pm

Telephone now on

**01703 - 65 - 22 - 22**

Please get permission from whoever pays the phone bill before calling,  
all calls charged at standard rates.

0597

### CAUTION

This Nintendo game is not designed for use with any attachment, "back-up" or game altering device. Use of any such device will invalidate your Nintendo product warranty and may cause damage to your Control Deck and/or Game Pak. Nintendo (and/or any Nintendo licensee or distributor) is not responsible for any damage or loss caused by the use of any such device. If use of such device causes your game to stop operating, disconnect the device or attachment carefully to avoid bending, breaking or damaging the connectors and resume normal game play. If your game pak/console ceases to operate and you have no device attached to it, please contact the Nintendo Service Centre on 01703 623200 (further details can be found on the following page). The contents of this Caution do not interfere with your statutory rights.

### WARNING

Copying of any Nintendo game is illegal and is strictly prohibited by national, local and international copyright laws (including sections 16 and 107 of the Copyright, Designs and Patents Act 1988 and the 1991 EC Directive on the Legal Protection of Computer Programmes). Back-up copies are not authorized and are not required to protect your software. Violators will be prosecuted.

0995

## 90-DAY LIMITED WARRANTY

### Super Nintendo Entertainment System GAME PAKS

THE Games Ltd ("THE") warrants that this Super Nintendo Entertainment System game pak shall be free from defects in material and workmanship for a period of 90 days from the date of purchase. If a defect covered by this warranty occurs during the 90-day limited warranty period, THE will repair or replace the defective pak, at its option free of charge. To receive this warranty service, contact the Nintendo Service Centre on 01703 623200.

Proof of purchase is required to claim under this warranty. This warranty shall not apply if the Super Nintendo Entertainment System Game Pak has been damaged by negligence, accident, unreasonable use, modification, tampering or by other causes unrelated to defective materials or workmanship.

This warranty does not interfere with your statutory rights.

## NINTENDO TECHNICAL SUPPORT

THE provides an out-of-warranty repairs service for installation, maintenance and service of Nintendo products. For full details of the charges and services available, please contact the Nintendo Service Centre on 01703 623200.

Nintendo Service Centre  
Parham Drive  
Boyatt Wood  
Eastleigh, Hants  
SO50 4NU England  
Tel. 01703 623200

✳️ WARRANTY VALID ONLY IN THE U. K. AND EIRE.